



Founded in 1971 with headquarters in Vancouver, Canada, Mosquito Consolidated Gold Mines Limited (www.mosquitogold.com) is a mining exploration and development

company with a history of success, and a portfolio of high-potential precious and base metal projects - gold, copper/gold, and molybdenum - located in low-political-risk environments in Canada and United States.

PRIMARY FOCUS: Mosquito's primary focus is development of its Idaho CUMO deposit, the **largest un-mined, open-pit molybdenum deposit in the world** with NI 43-101 confirmed resource of:

<u>Indicated</u>	<u>Inferred</u>	
2.03 billion	3.95 billion	short tons
2.14 billion	2.34 billion	lbs moly oxide
3.27 billion	5.55 billion	lbs of copper
140.7 million	242.5 million	ounces of silver
158.2 million	90.9 million	lbs of tungsten

WELL POSITIONED: with increasing global demand for molybdenum that exceeds the supply and forecasted increasing prices, Mosquito holds four molybdenum projects in the United States. In addition, the Company is well diversified with multi-element projects including significant gold plays.

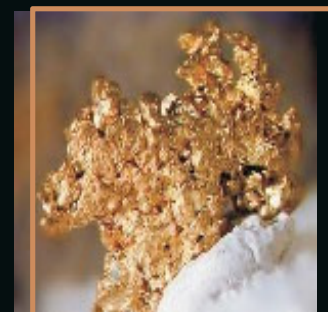
CUMO - A GIANT MOLYBDENUM (Mo) AND COPPER (Cu) RESOURCE

- Mosquito owns 100% interest (subject to only 0.5% NSR)
- Currently contains 2.03 billion tons indicated and 3.95 billion tons inferred.
- By-products Cu, Ag, W, Re and sulphuric acid cover a large part of production costs. Independent Preliminary Economic Assessment indicates Net Present Value of **US\$16 Billion** at 150,000 tons per day with a 36% Internal Rate of Return, with a 2.3 year payback of capital and a cost of **US\$3.90/lb** Molybdenum oxide. Capable of generating **US\$1 to US\$1.5 billion in profit per year**. With optimization and more detailed work, goal is to get production costs under \$3 /lb Molybdenum oxide.
- Deposit located in a politically stable country, in an area of extensive historic mining and logging in one of the poorest counties of Idaho. Mining infrastructure, power, water, major road and rail networks and a trained mining-industrial workforce are available within 50 miles of the property.
- No serious environmental hurdles are apparent. The neighbouring Thompson Creek Molybdenum mine recently permitted an expansion.
- Foreign investment into major projects within the USA is encouraged with numerous federal and state incentive programs for project development and there are no impediments to foreign ownership/control of USA companies controlling mineral resources.
- Estimated that Feasibility could be achieved within two to three years, after which one of the worlds largest and most profitable mines would be ready to be placed into production. Ready to catch the next high-price metal cycle.

TSX-V : MSQ

81.8 million shares outstanding
\$45 million market cap.

MORE THAN MOLY: In addition to Mosquito's four molybdenum projects which have multi-element features (copper, silver and gold), the Company also has significant gold projects in historically prolific regions in British Columbia, Ontario, and Nevada.



Mosquito's management and Board of Directors have extensive backgrounds in the required management and technical aspects of mine development and operations



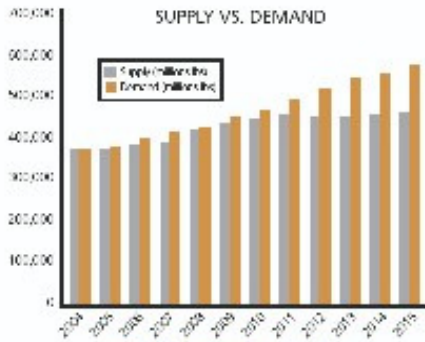
MOLYBDENUM IN THE 21ST CENTURY - A WONDER METAL

MOLY ATTRIBUTES:

Ideal for tough environments where heat, pressure and corrosion are factors
 Higher moly content makes steel stronger and lighter
 Higher moly content makes stainless steel more resistant to corrosion
 Due to low-toxicity used as catalyst in energy production

MOLY APPLICATIONS:

Advanced High Strength Steel (AHSS), super alloy for pipeline steel
 Corrosion-resistant for off-shore drilling and desalination projects
 Increase safety for nuclear power plant construction
 Increased safety and efficiency in auto, ship, aircraft and aerospace manufacture
 Catalyst for removing oil form tar sands and reducing sulfur content of diesel
 Agriculture use as fertilizer increasing crop yields up to 30%



MOLY DEMAND:

Expected to increase between 5 - 7% annually during next decade with demand forecasted to outstrip supply for several years to come. Global demand calls for additional 21 million lbs by 2011 rising to 85 million lbs by 2015.

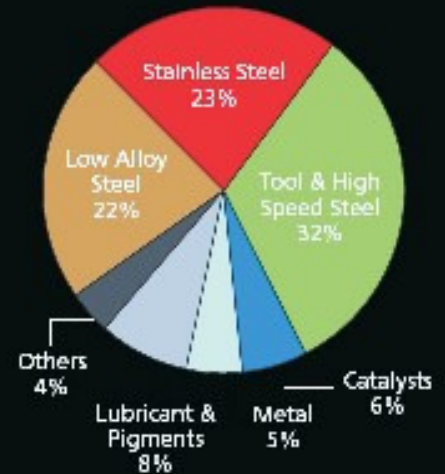
MOLY PRICING:

Price forecasted to remain flat during 2009-2010 starting to rise in 2011 with average price forecast at \$13 to \$15 over next seven years.

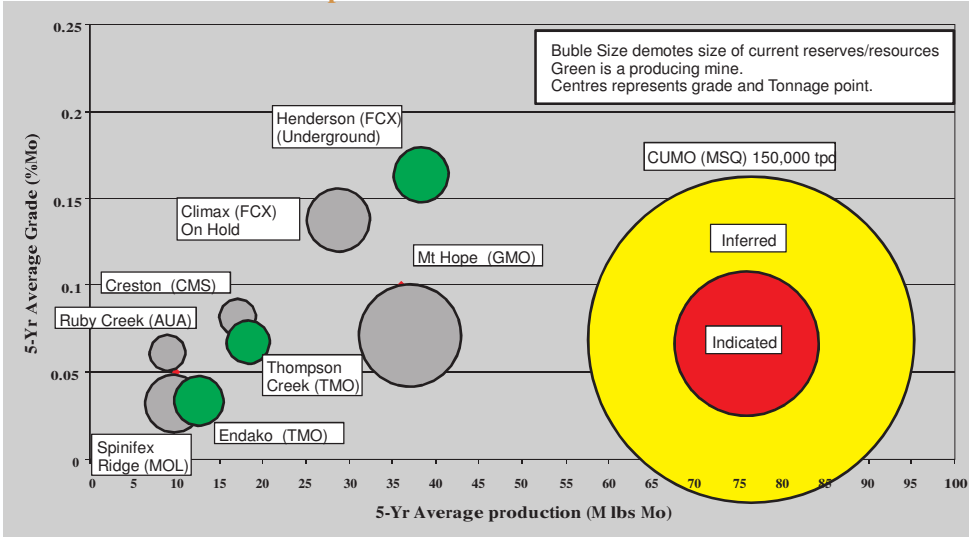
“With a supply shortfall and prices forecasted to increase, CUMO with its 4.1 billion pounds of low cost moly is a company-maker.”

**- Brian McClay,
 President and CEO,
 Mosquito**

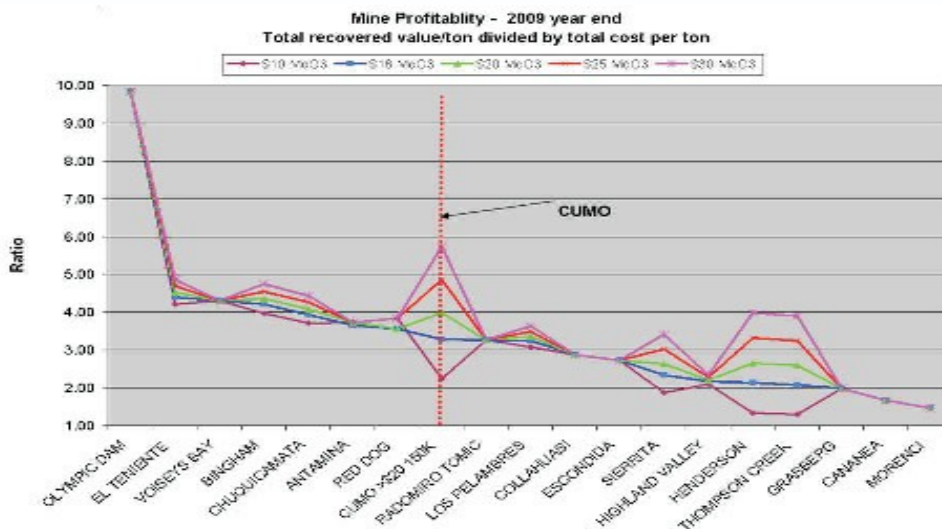
**Molybdenum Primary Uses
 2009 Estimated Moly Demand:
 431.9 million Pounds**



CUMODwarfs all other deposits



CUMOProfitability Ranks with the Best : Based on 2009 metal prices



1616 West 3rd Ave., Suite 100
 Vancouver, British Columbia
 Canada. V6J 1K2

Telephone: (604) 689-7902
 Fax: (604) 689-7816
 Toll Free: 1-800-667-0873
 Info@mosquitogold.com

